

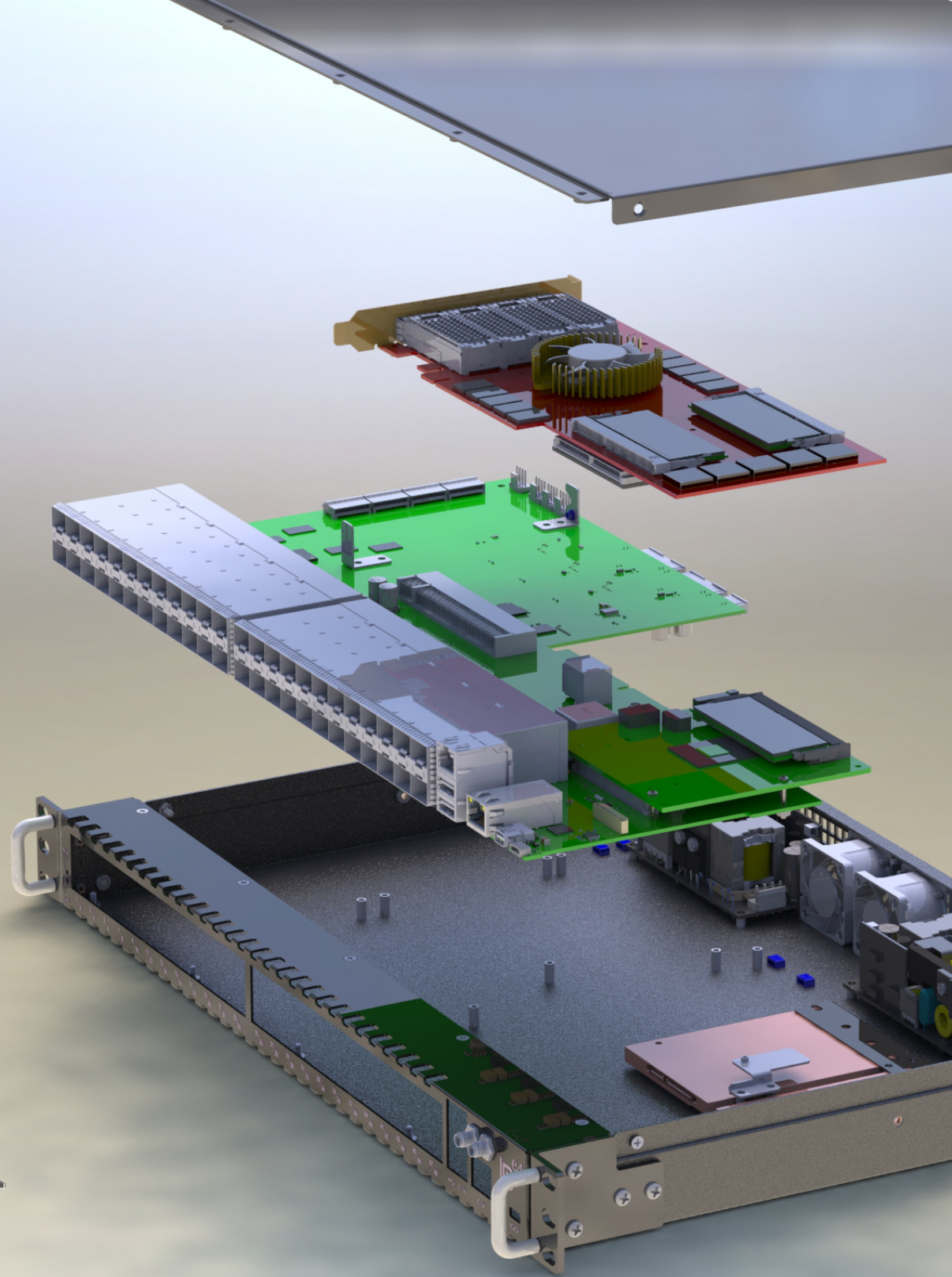
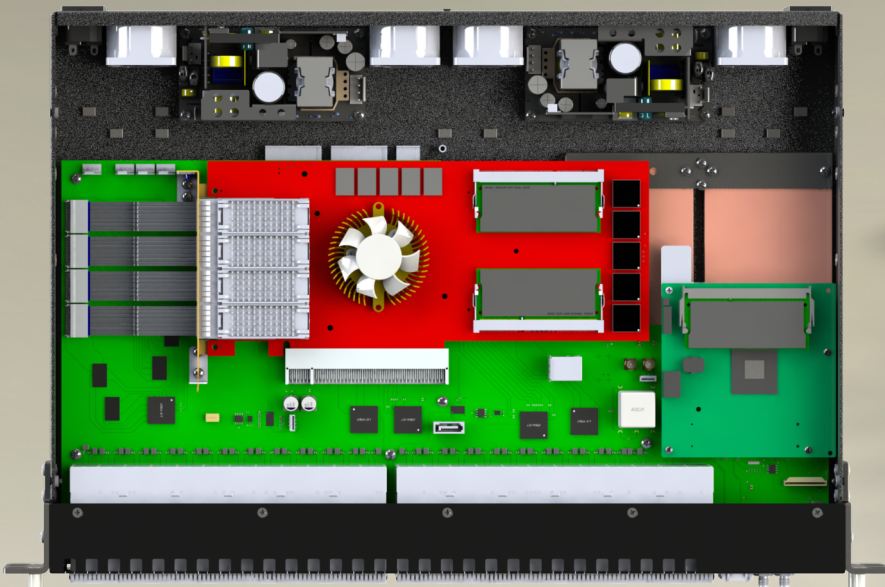


**LDA
Technologies**

www.ldatech.com

e4

FPGA board agnostic enclosure
ETHERNET ports (including 25GbE)
PCIe and other serial links conversion into SFP+ ports
25/50/100GbE and 10/40GbE Layer 1 replication
10 ppb OCXO clock source
Wide range of supported CPUs
Per port signal monitoring tools
Wide range of supported OS
2 internal SSDs
Ultra-short depth, 1U
Zero configuration option



e4

WHY LDA E4

ETHERNET PORTS (including 25GbE)	<ul style="list-style-type: none"> - 16 PORTS ARE 25.8Gbps CAPABLE - 32 PORTS ARE UP TO 12.5Gbps - TOTAL 48 zSFP+ PORTS - FULL SIGNAL RECOVERY, REGENERATION, CONDITIONING FOR EACH PORT
PCIe AND OTHER SERIAL LINKS CONVERSION INTO SFP+ PORTS	INCREASING AVAILABLE NUMBER OF HIGH-SPEED LINKS BASED ON FPGA BOARD'S PCIe CONNECTOR TYPE (x4, X8, X16) AND/OR AVAILABILITY OF OTHER SERIAL LINKS (FMC, SATA, ETC.).
FPGA BOARD AGNOSTIC ENCLOSURE	<ul style="list-style-type: none"> - ANY PCIe FORM FACTOR - ANY PCIe FPGA BOARD MANUFACTURER - ANY FPGA VENDOR
25/50/100GbE AND 10/40GbE LAYER 1 REPLICATION	<ul style="list-style-type: none"> - UNDER 3NS REPLICATION LATENCY - BOTH FRONT PANEL INPUT AND FPGA BOARD OUTPUT CAN SERVE AS A REPLICATION SOURCE - REPLICATION SCENARIOS: PREDEFINED AS WELL AS CONFIGURABLE THROUGH CUSTOM RULES
DESIGNATED PRECISION POWER CONTROL	<ul style="list-style-type: none"> - FPGA BOARD INDEPENDENT POWER OFF / POWER ON - CURRENT DRAW MONITORING IN REAL TIME - DEDICATED COOLING
ULTRA-FAST STARTUP TIME	<ul style="list-style-type: none"> - NETWORK AND PCIe: UNDER 3 SECONDS - NETWORK PORTS' OPERATION DOES NOT DEPEND ON INSTALLED OS, GIVEN THAT FPGA BOARD CAN OPERATE IMMEDIATELY AFTER POWER-ON WITHOUT ADDITIONAL CONFIGURATION FROM HOST OS
10 ppb TCXO CLOCK SOURCE	VIA SMA, FPC AND PCIe CONNECTORS
DIMENSIONS : ULTRA-SHORT DEPTH, 1U	16.9" X 1.71" X 12" ALLOWS TO INSTALL TWO DEVICES BACK TO BACK IN A STANDARD 25" DEEP RACK
TIMESTAMPING PORTS	2 ON FRONT PANEL.
WIDE RANGE OF SUPPORTED CPUs	INTEL ATOM/XEON D/CORE I ARE SUPPORTED VIA COM EXPRESS TYPE 6 OR TYPE 10 FORM FACTORS.
2 INTERNAL 2.5 inch SSDs	OPTIONAL WITH COM EXPRESS MODULES THAT HAVE ON-BOARD STORAGE
PER PORT SIGNAL MONITORING TOOLS	<ul style="list-style-type: none"> - PRBS PATTERN GENERATOR, CHECKER - NON-INTRUSIVE EYE MONITOR
OUT-OF-BAND MANAGEMENT	<ul style="list-style-type: none"> - DEDICATED ETHERNET PORT - MICRO USB SERIAL CONSOLE
INTERNAL USB PORTS	INTENDED FOR FPGA DEBUGGING TOOLS (JTAG ADAPTERS) WITH FULL POWER CONTROL
WIDE RANGE OF SUPPORTED OPERATING SYSTEMS	<ul style="list-style-type: none"> - ANY UP-TO-DATE LINUX DISTRIBUTION (RED HAT, CENTOS, UBUNTU, ETC.) - WINDOWS - DEDICATED ONL SUPPORT: COMING SOON!
ZERO CONFIGURATION OPTION (I.E. NO MANDATORY DEVICE CONFIGURATION)	DEVICE PARAMETERS, SUCH AS PORT SPEEDS, SWITCHING MATRIX ASSIGNMENTS, MAY BE PRECONFIGURED AT FACTORY, OR BY THE CUSTOMER VIA SERIAL/OUT-OF-BAND MANAGEMENT PORTS WITHOUT INSTALLING OPERATING SYSTEM ON THE HOST CPU.
Optional installable LDA CUSTOM PACKAGES	<ul style="list-style-type: none"> - MONITORING - DIAGNOSTICS - CONFIGURATION, ETC.

